

# MPI Intelligent PDU

## Metered and Switched Rack PDU

### Quick Facts and Benefits

- Single-phase input that support strip/branch -level metering or strip/branch -level metering and outlet switching
- Measures and monitors voltage, current (branch), frequency, power (kW), energy consumption (kWh) and power factor.
- Threshold/Alert Capabilities provide preemptive notification of any impending overload issues before they occur
- Supports external environmental sensors such as temperature, humidity, cabinet door status, water leakage and infrared motion sensors for notification of any impending environmental issues
- LED display and a built-in browser interface for local and remote access with real-time data
- Remote switching capability to power on/off outlets (Only for Switched PDU)
- Power sequential startup and reboot on outlets groups defined by user (Only for Switched PDU) – Protects plugged-in devices from sudden power surge
- Onboard data log for individual PDU with up to 10,000 empirical data and alarm logs
- Highly compatible with multiple management software platform including RDU-M, Avocent RPM
- IP and Serial Interface Options – Options to install by connecting directly to the network or save IP connections by using the serial interface to connect directly to RDU appliances already connected to the network
- Supports horizontal and vertical models for a variety of rack configurations in branch and remote offices

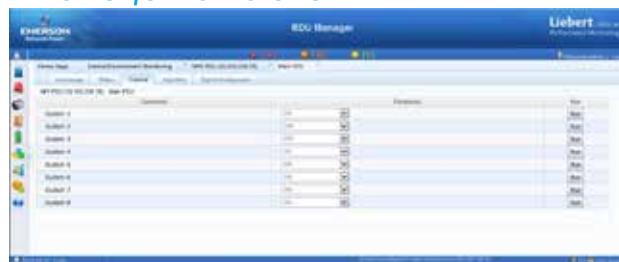
Metering and monitoring features, along with the capability to set custom thresholds, allow companies to optimize their electrical infrastructure without the risk of downtime due to overloaded circuits.

The MPI PDU delivers accurate, real-time, monitoring of all connected devices via the Web manager

### Management Software Integration (RDU-M)



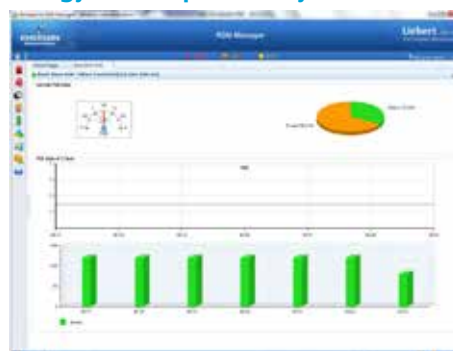
### Remote On/Off Control On Outlets

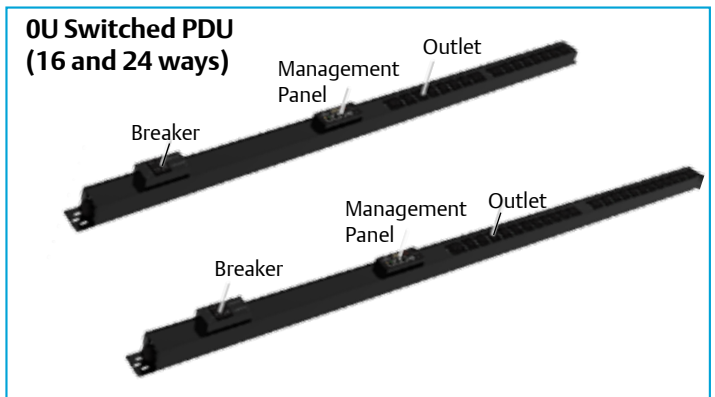
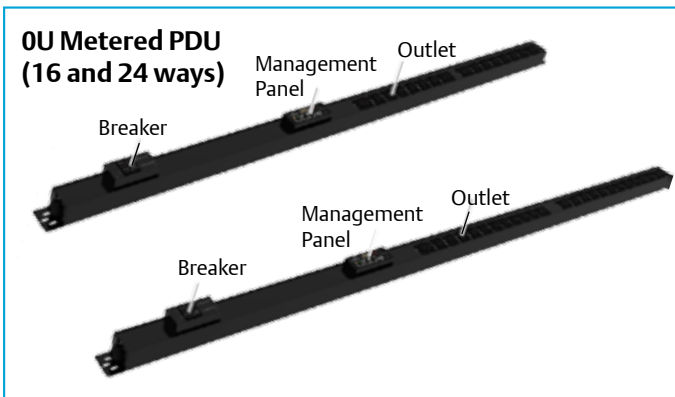
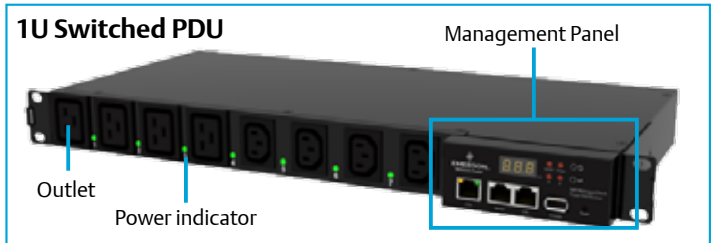
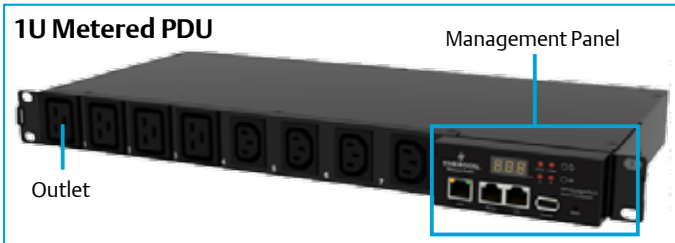


### Alarms and Monitoring



### Energy Consumption Analysis





## Plug

No.	Type	Appearance	Rate Current	Power Supply Interface for PDU
1	C20		16A	
2	IEC60309 2P + PE16A		16A	
	IEC60309 2P + PE32A		32A	
3	Fixed		16A or 32A	L - Line (Red) N - Line (Blue) PE - (Yellow-Green)

Note: The dimensions of IEC60309 2P + PE 16A / IEC60309 2P + PE 32A plugs are different

## Outlet

No.	Type	Appearance	Rate Current
1	IEC C13		10A
2	IEC C19		16A

Note: the dimensions of GB10A / 16A outlets are different.

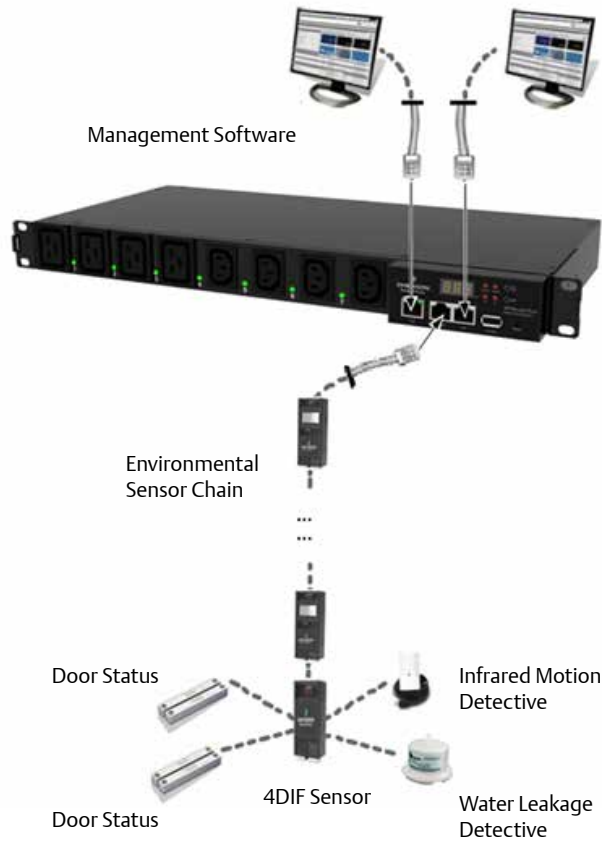
## Specifications

Input Voltage:	100 ~ 240Vac/ Single Phase
Frequency:	45-65Hz
Metering Accuracy:	
Voltage:	±1%(200~240Vac); ±2% (other range)
Current:	±0.2A
External Environmental Sensors:	
Up to 8 sensors per PDU sensor port:	
Temperature sensor or Temperature & Humidity sensor x 4	
4DIx 1 (required for DI sensors)	
Rack Door Status x 2	
Water Leakage Detection x 1	
Infrared Motion Detection x 1	
External Power Required:	No
Port Type:	RJ45
Cable Type:	Standard CAT-5 Patch Cable
Maximal cable distance from end to end:	100m (Between the PDU to the last sensor in chain)

Physics:		
Type	Dimension (W x H x D, mm)	Weight
1U 8 ways PDU	440 x 43.5 x 260	<=5KG
0U 16 ways PDU	56 x 1422 x 50	<=5.5KG
0U 24 ways PDU	56 x 1780 x 50	<=6.0KG
Working Environmental:		
Operating Temperature:	-20°C to 55°C	
Storage Temperature:	-40°C ~ 70°C	
Networking Connection:		
Number:	1	
Type:	1 - 10/100 Ethernet	
Accessories Included:	Rack-mount kit, tool less-mounting hardware with vertical models	
Communications options supported:	Browser(HTTP/HTTPS), Serial(ModBus) or IP(SNMP/Private protocol) (using RDU appliance or RPM management software)	
Standards	CE / C-Tick	

Management Panel provides the network communication, system software upgrading, external sensor integration and onboard LED display

Supports external environmental sensors such as temperature, humidity, rack door status, water leakage and infrared motion detectable in chain.



Temperature Sensor



Temperature & Humidity Sensor

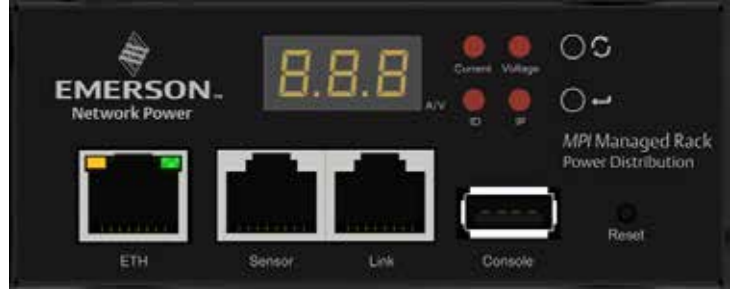


4DI with Phoenix Contact Sensor



4DIF with RJ45 Contact Sensor

## MPI PDU Management Panel



ETH	Ethernet Port	Communication to the management software
Sensor	Sensor Port	Up to 8 sensors per PDU sensor port: Temperature sensor or Temperature & Humidity sensor x 4 Rack Door Status x 2 Water Leakage Detection x 1 Infrared Motion Detection x 1 4DIF x 1 as mandatory for connection to Door Status / Water Leakage Detective / Infrared Motion Detective
Link	Link Port	Direct connection to the COM port of RDU-A
Console	Console Port	System Maintenance
Current	Indicator	Green light lasting: Data displayed on the LED and no real-time alarm Red light lasting: Data displayed on the LED and with real-time alarm
Voltage	Indicator	Red light spackle: Data not displayed on the LED but with real-time alarm
Link	Indicator	Green light lasting: Data displayed on the LED
IP	IP address Indicator	Green light lasting: Data displayed on the LED
A/V	Current / Voltage	Value of the data (Current/ Voltage) displayed
	Cycling Display	Switch the data display of Current/ Voltage/IP/ID and operation on ID address setting
	Confirm	Start / End operation on ID address setting
Reset	Reset	Push with duration > 5s, Restore the password of admin as default setting

# MPI Intelligent PDU

Category	Model Number	Rate Current	Qty of Outlet	Type of Outlet	Type of Plug	Qty of Breaker	Rate Current of Breaker	Dimension (W x H x D, mm)	Installation in Racks	Power Cord Length
1U Metered PDU	MP-DHCNHA08N00X	16A	8	C13	C20	2	10A	440.0 x 43.5 x 260.0	Horizontal mounting	3 meters
	MP-DHENCA04B04X	32A	4	C13	IEC60309	2	17A			
			4	C19						
	MP-DHANCA04B04X	32A	4	C13	Fixed	2	17A			
			4	C19						
	MP-DHENCA08N00X	32A	8	C13	IEC60309	2	17A			
	MP-DHANCA08N00X	32A	8	C13	Fixed	2	17A			
	MP-DHENCB08N00X	32A	8	C19	IEC60309	2	17A			
MP-DHANCB08N00X	32A	8	C19	Fixed	2	17A				
							MP-DHENCA06B02X	32A	6	C13
			2	C19						
1U Switched PDU	MP-EHCNHA08N00X	16A	8	C13	C20	2	10A	440.0 x 43.5 x 260.0	Horizontal mounting	3 meters
	MP-EHENCA04B04X	32A	4	C13	IEC60309	2	17A			
			4	C19						
	MP-EHANCA04B04X	32A	4	C13	Fixed	2	17A			
			4	C19						
	MP-EHENCA08N00X	32A	8	C13	IEC60309	2	17A			
	MP-EHANCA08N00X	32A	8	C13	Fixed	2	17A			
	MP-EHENCB08N00X	32A	8	C19	IEC60309	2	17A			
MP-EHANCB08N00X	32A	8	C19	Fixed	2	17A				
							MP-EHENCA06B02X	32A	6	C13
			2	C19						
0U Metered PDU	MP-DVENCA16N00X	32A	16	C13	IEC60309	2	17A	56.0 x 1422.0 x 50.0	0U vertical mounting	3 meters
	MP-DVENCA12B04X	32A	12	C13	IEC60309	2	17A			
			4	C19						
	MP-DVCNHA16N00X	16A	16	C13	C20	2	10A			
	MP-DVENCA18B06X	32A	18	C13	IEC60309	2	17A			
								6	C19	
MP-DVANCA18B06X	32A	18	C13	Fixed	2	17A				
							6	C19		
0U Switched PDU	MP-EVENCA16N00X	32A	16	C13	IEC60309	2	17A	56.0 x 1422.0 x 50.0	0U vertical mounting	3 meters
	MP-EVENCA12B04X	32A	12	C13	IEC60309	2	17A			
			4	C19						
	MP-EVCNHA16N00X	16A	16	C13	C20	2	10A			
	MP-EVENCA18B06X	32A	18	C13	IEC60309	2	17A			
								6	C19	
MP-EVANCA18B06X	32A	18	C13	Fixed	2	17A				
							6	C19		

Marketing.AP@emerson.com  
www.EmersonNetworkPower.Asia

While every precaution has been taken to ensure accuracy and completeness herein, Emerson Network Power assumes no responsibility, and disclaims all liability, for damages resulting from use of this information or for any errors or omissions. Specifications are subject to change without notice.

Emerson Network Power and ASCO® are trademarks of Emerson Electric Co. or one of its affiliated companies. All other names and logos referred to are trade names, trademarks, or registered trademarks of their respective owners. ©2014 Emerson Electric Co. AP14ENT-MPIIntelligentPDU-DS